



2 Tonbridge Road, Hildenborough – TN11 9BS  
Tonbridge

Guide Price £550,000

**bracketts**  
est. 1828





- ALL FURNITURE IN IMAGES HAS BEEN ADDED DIGITALLY
- Period Coach House - End Terrace
- Modernised Throughout
- Large Sitting Room
- Open Plan Kitchen / Dining Room
- Cloakroom WC / Utility Storage
- Family Bathroom & En Suite Shower
- Rear Garden
- Off Street Parking 2-3 Vehicles
- No Onward Chain

GUIDE PRICE £550,000 - £575,000

Offered for sale a beautifully modernised three-bedroom Victorian Cottage set within an exclusive private tucked away position along a private drive serving three unique homes, The Old Coach House is a stunning example of Victorian charm externally blended seamlessly with contemporary interior design. Perfectly positioned on the borders of Hildenborough & Tonbridge, the property offers easy access to Tonbridge town centre, mainline stations, excellent local amenities, and highly regarded schools. Internally a beautifully presented interior that has been thoughtfully modernised throughout. Entrance hall, cloakroom/WC and an open-plan kitchen dining room. A useful utility cupboard provides additional storage and plumbing for a washing machine.

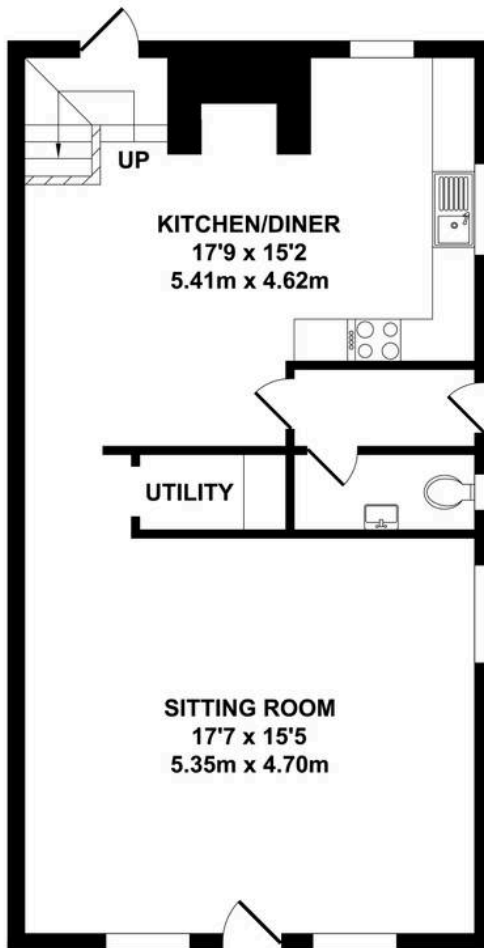
Council Tax band: D



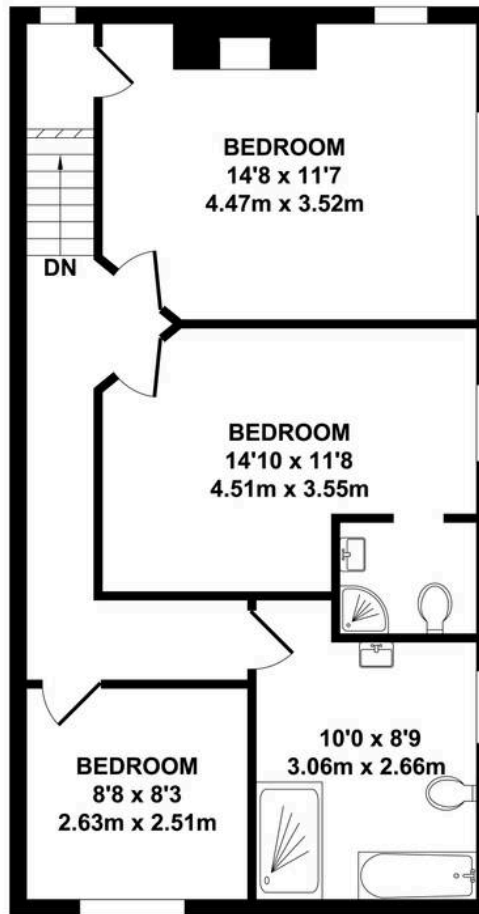




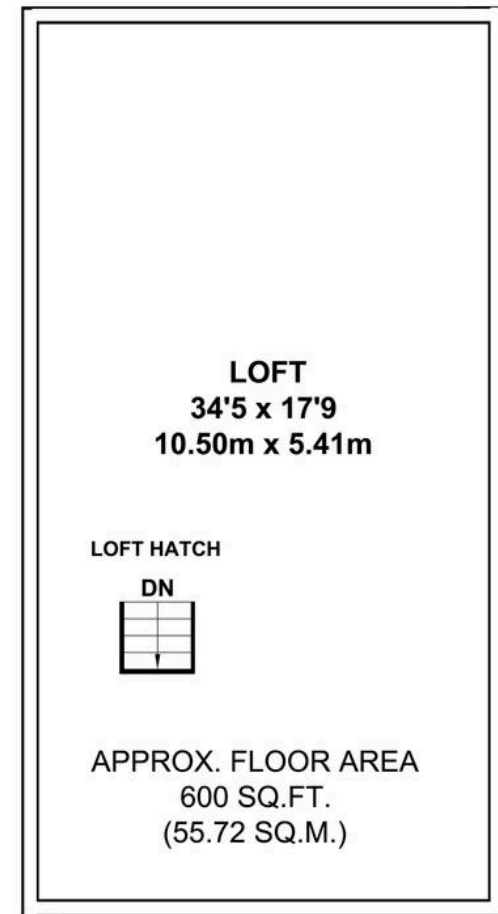




**GROUND FLOOR**  
**APPROX. FLOOR AREA**  
**600 SQ.FT.**  
**(55.72 SQ.M.)**



**FIRST FLOOR**  
**APPROX. FLOOR AREA**  
**600 SQ.FT.**  
**(55.72 SQ.M.)**



**TOTAL APPROX. FLOOR AREA 1200 SQ.FT. (111.44 SQ.M.)**

Whilst every attempt has been made to ensure the accuracy of the floor plan contained here, measurements of doors, windows, rooms and any other items are approximate and no responsibility is taken for any error, omission or mis-statement. This plan is for illustrative purposes only and should be used as such by any prospective purchaser. The services, systems and appliances shown have not been tested and no guarantee as to their operability or efficiency can be given.