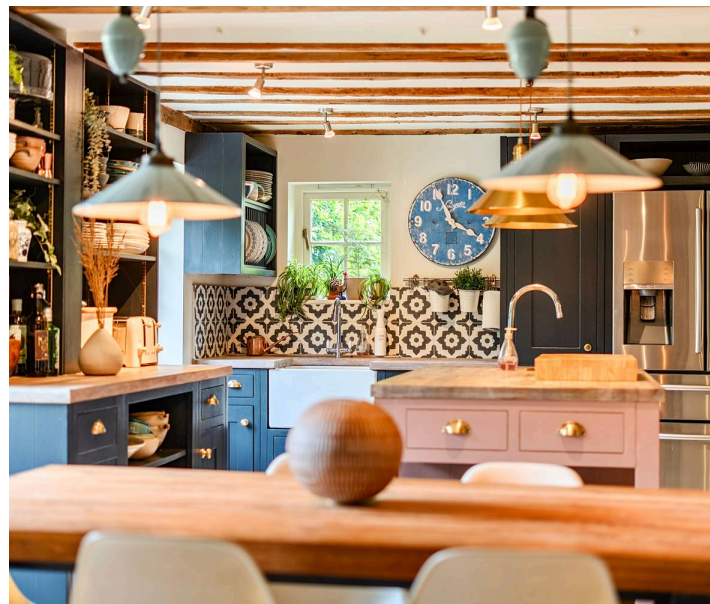
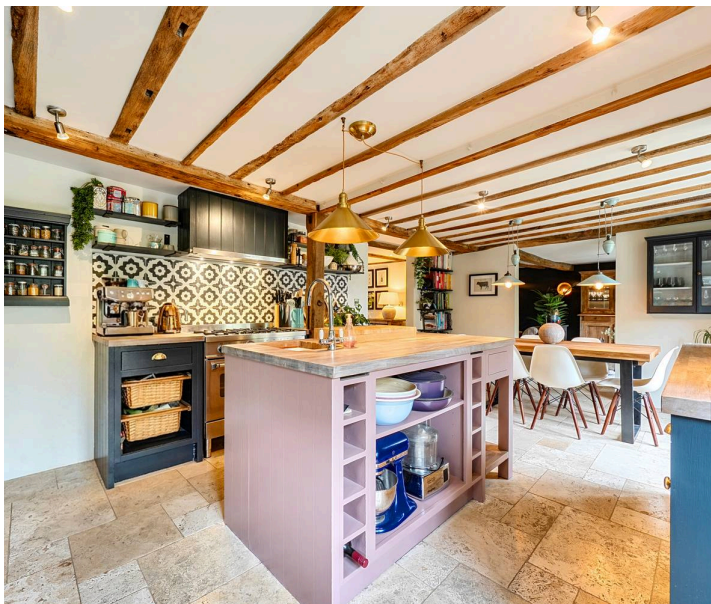




Heath Cottage The Heath, Horsmonden – TN12 8JE
Tonbridge

Guide Price £750,000

bracketts
est. 1828



Guide Price £750,000 - £775,000. Bracketts are delighted to offer for sale a fantastic opportunity to purchase this beautifully presented and detached, three-bedroom grade II listed cottage, set in a secluded and private spot in the heart of Horsmonden Village. This lovely home boasts a wealth of character throughout and internally comprises entrance hall, study, utility room, kitchen / dining room and living room featuring woodburning stove and french doors opening up from the living spaces onto the garden. Upstairs the property benefits from a large landing area which could lend itself to an additional study space or library / reading nook. There are then three double bedrooms, a large family bathroom with free standing bath and separate walk-in shower and the principle bedroom benefits from a walk-in dressing room which then leads through to the ensuite. Outside there is a private and enclosed rear garden which offers a large patio seating area, beautiful and established raised flower beds, kitchen garden area, vegetable patch and lawned area to the side. There is also a garden shed for storage, as well as additional bin storage. The property is situated in the heart of Horsmonden Village and is tucked away from the road but within close proximity to the Village Green, Village shop, chemist and primary school. There are also beautiful countryside walks on your doorstep which include Sprivers National Trust and the High Weald Landscape Trail. The property is being offered for sale with no onward chain and an internal viewing comes highly recommended.

Council Tax band: E

Tenure: Freehold



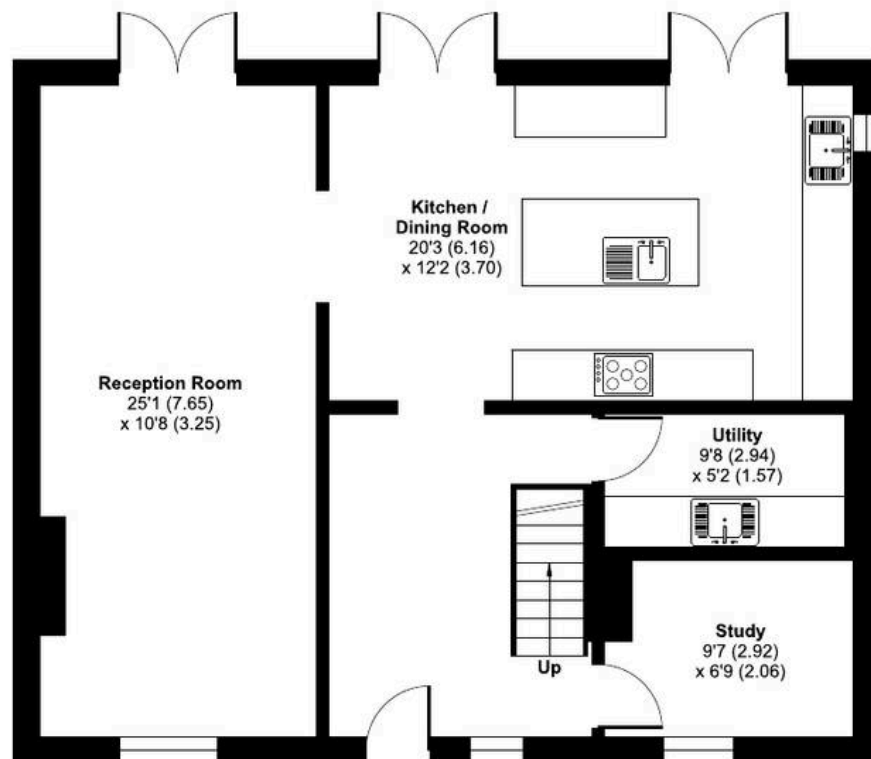
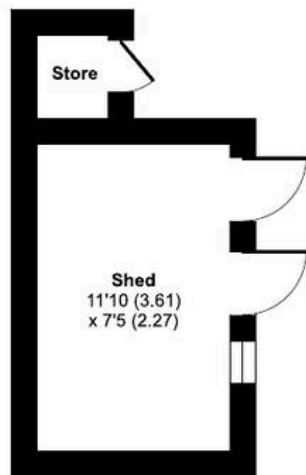
Heath Cottage, The Heath, Horsmonden, Tonbridge, TN12

Approximate Area = 1574 sq ft / 146.2 sq m

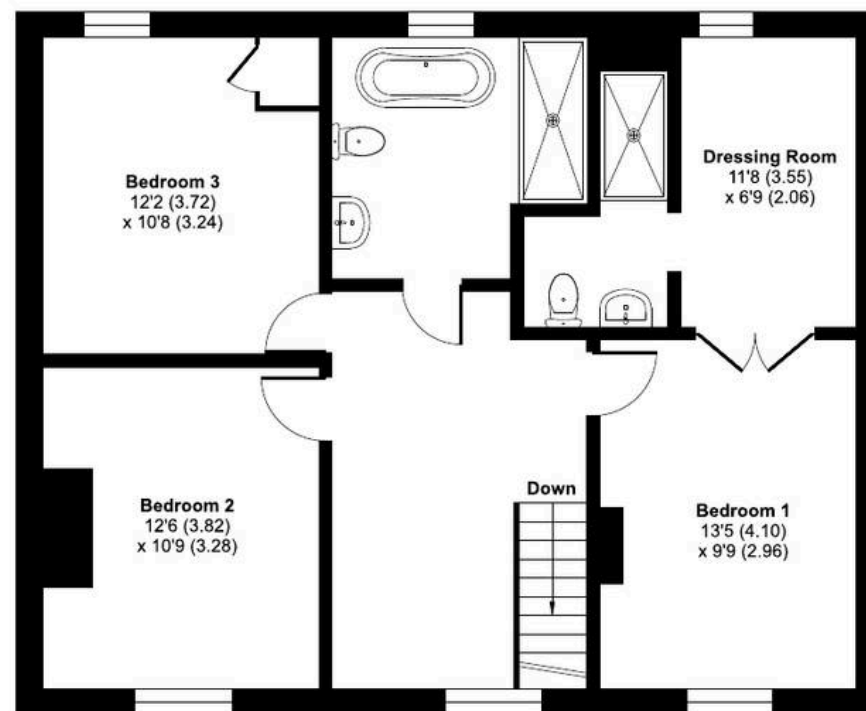
Outbuilding = 97 sq ft / 9 sq m

Total = 1671 sq ft / 155.2 sq m

For identification only - Not to scale



GROUND FLOOR



FIRST FLOOR

