



**4 Rosehip Lane, Tunbridge Wells – TN2 3XU**  
Tunbridge Wells

Guide Price **£400,000**

**bracketts**  
est. 1828



- TWO DOUBLE BEDROOMS
- OPEN PLAN LIVING
- MODERN FITTED KITCHEN
- SOUTH FACING GARDEN
- ALLOCATED PARKING
- POPULAR KNIGHTS WOOD DEVELOPMENT
- EPC RATING B
- COUNCIL TAX BAND D

Situated in a quiet residential position on **Rosehip Lane in Tunbridge Wells**, this well-presented **two-bedroom semi-detached house** offers comfortable accommodation arranged over two floors and would make an ideal purchase for **first-time buyers, investors or those looking to downsize**.

The ground floor comprises a **bright and welcoming living room**, providing a comfortable space for relaxing or entertaining, open plan to a **well-appointed kitchen** offering a good range of storage and worktop space. There are fitted appliances including a slimline dishwasher, washing machine, and fridge freezer.

Upstairs, the property benefits from **two bedrooms**, including a generous principal bedroom with large fitted storage and a further second bedroom overlooking the rear garden. These are complemented by a modern, three-piece **family bathroom**.

Externally, the property enjoys a **south-facing rear garden**, designed to be **low maintenance**, providing an ideal space for outdoor dining and relaxing while enjoying the sun throughout the day. There is rear access to the property which opens into the parking area. The property also benefits from **off-road parking**, adding to the practicality of the home.

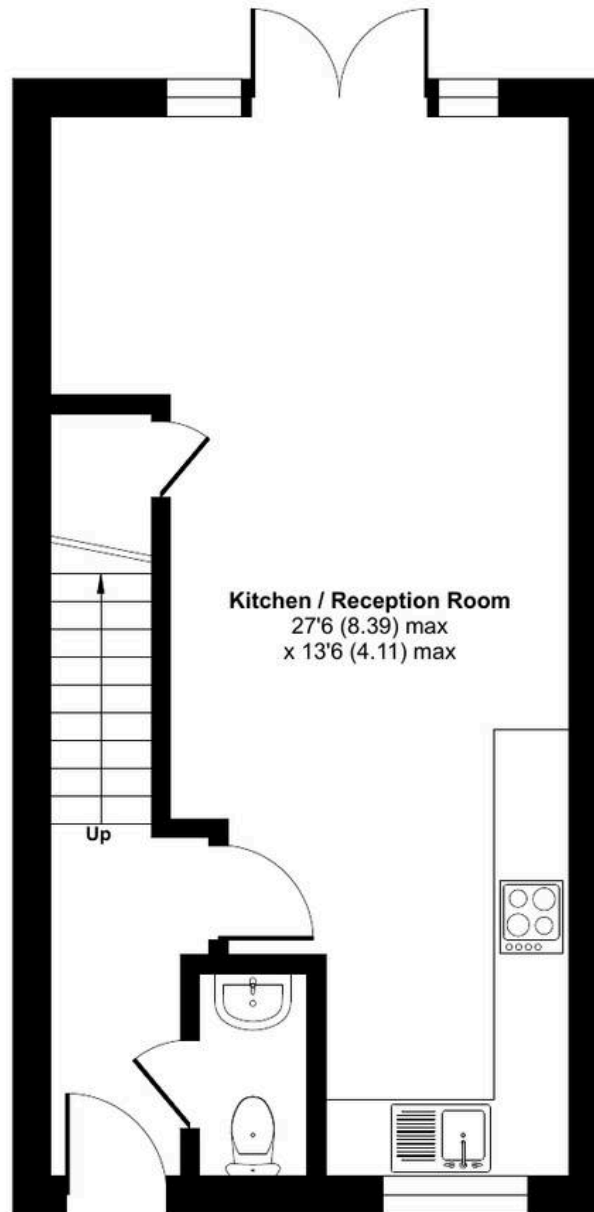




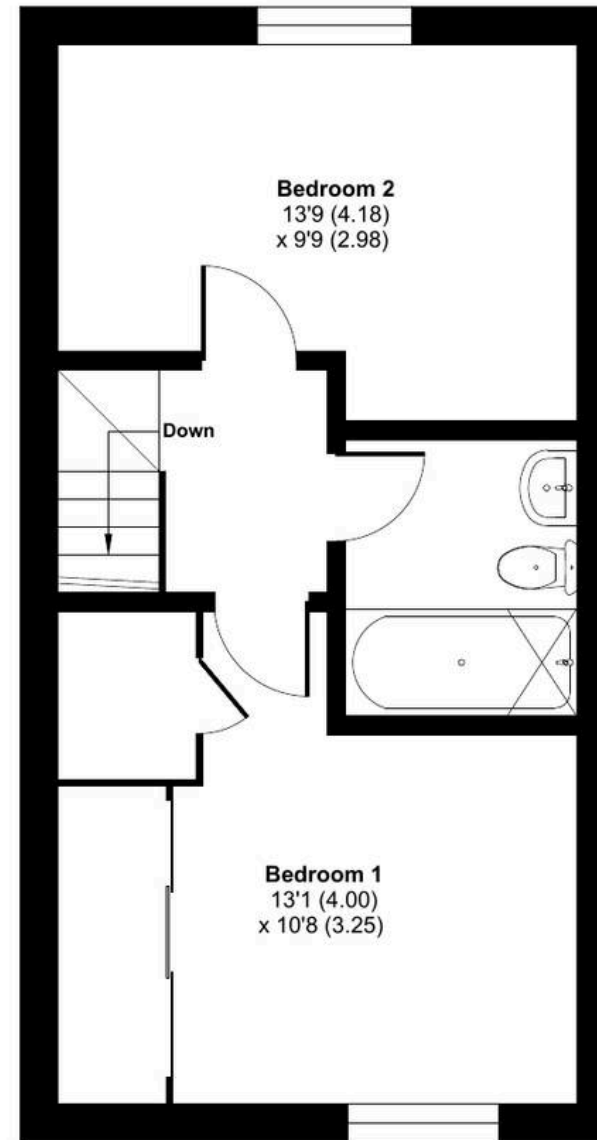
# Rosehip Lane, Tunbridge Wells, TN2

Approximate Area = 742 sq ft / 68.9 sq m

For identification only - Not to scale



GROUND FLOOR



FIRST FLOOR

