



Garden Flat, 70 Mount Ephraim, Tunbridge Wells – TN4 8BG
Tunbridge Wells

£2,250 pcm
brackets
est. 1828



Garden Flat

70 Mount Ephraim, Tunbridge Wells

- STUNNING PRIVATE ENCLOSED GARDEN!! ... EXCEPTIONAL FOR AN APPARTMENT
- THE KITCHEN LEADS TO A PRIVATE TERRACE
- VERY SPACIOUS RECEPTION ROOM WITH EXPOSED BRICK & INGLENOOK FEATURES
- DOUBLE BEDROOM WITH ENSUITE & A FURTHER SMALLER BEDROOM & BATHROOM
- PRIVATE ENTRANCE
- PERMIT PARKING
- WALKING DISTANCE FROM THE CENTRE OF TUNBRIDGE WELLS & STATION
- AVAILABLE UNFURNISHED FOR OCCUPATION FROM NOW

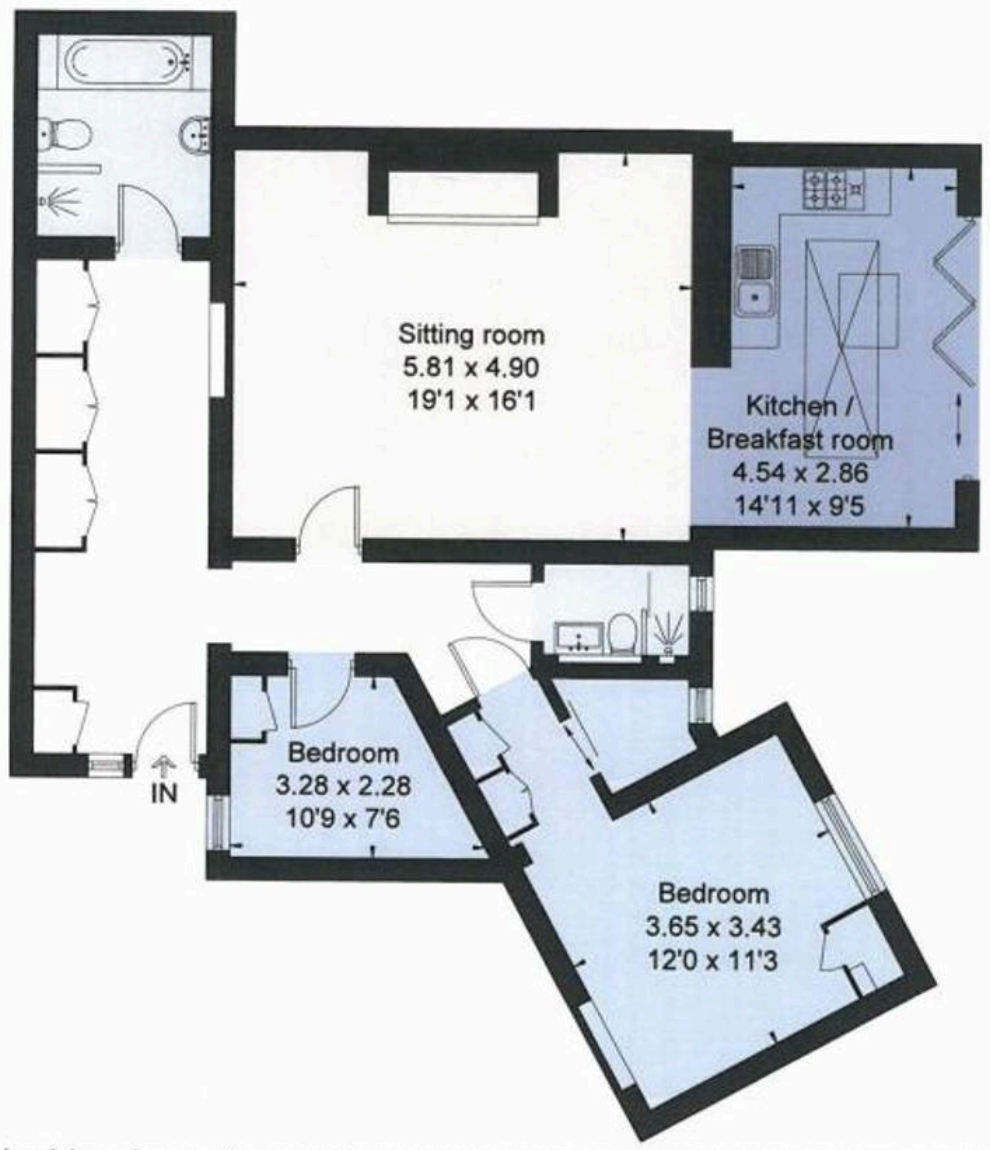
The Garden Flat is a surprisingly quiet and secluded apartment with direct access on to a private terrace and a stunning garden which is surprisingly spacious. The apartment is situated set back from Mount Ephraim on a small private crescent, which was once the home of the Duchess of Wellington, this imposing residence has a prominent position just next to The Common overlooking the town.

The property has its own entrance, which is located down a few steps to the side. The entrance hall is wide and fitted with extensive tall built in cupboards. The beautiful wooden floors are immediately striking as well as the character features like the carved window from the hallway looking into the expansive living room which has a decorative inglenook fireplace and exposed brick wall. This leads to a delightful kitchen breakfast room which has bifold doors to the private terrace with balustrade looking on to the





Approximate Area = 101.8 sq m / 1096 sq ft
For identification only. Not to scale.
© Fourwalls Group



Surveyed and drawn in accordance with the International Property Measurement Standards (IPMS 2: Residential)
fourwalls-group.com 240454