



Mount Avenue, Yalding, ME18  
Maidstone

Guide Price £380,000

**bracketts**  
est. 1828



Situated in the picturesque village of Yalding in Kent, this well presented three-bedroom semi-detached family home forming part of a quiet cul de sac close to the village centre. The ground floor comprises entrance hall, sitting room and a spacious open-plan kitchen and dining area. To the first floor there are three well-proportioned bedrooms and a family bathroom. External, the property boasts a good-sized garden, mainly laid to lawn with mature shrubs, trees & borders. To the rear, there is an en bloc garage offering useful storage or parking and to the front, there is potential to create a driveway, subject to the necessary consents.

Conveniently located close to local village amenities, this home also benefits from easy access to scenic river walks. We recommend viewing at your earliest convenience.

Yalding has a village store, post office, the village also has a primary school and doctor's surgery. The larger towns of Tonbridge, Tunbridge Wells and Maidstone provide a full array of shopping facilities, whilst Paddock Wood – just over four miles away – has local stores, a Waitrose supermarket and a station with main line services to London and the coast. EPC C Council Tax band: D

Tenure: Freehold



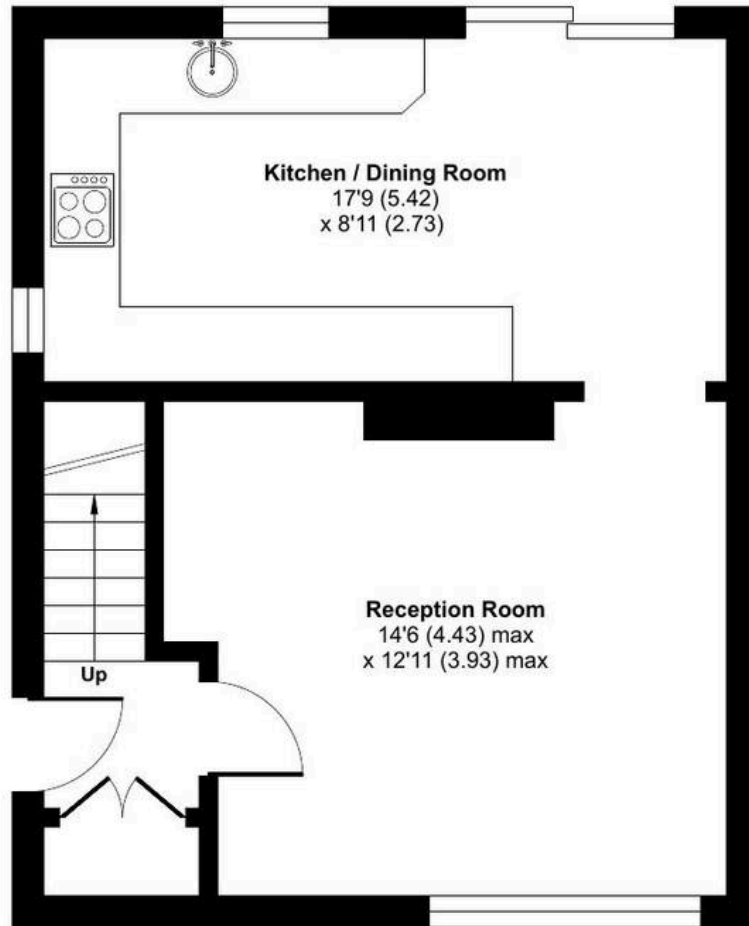




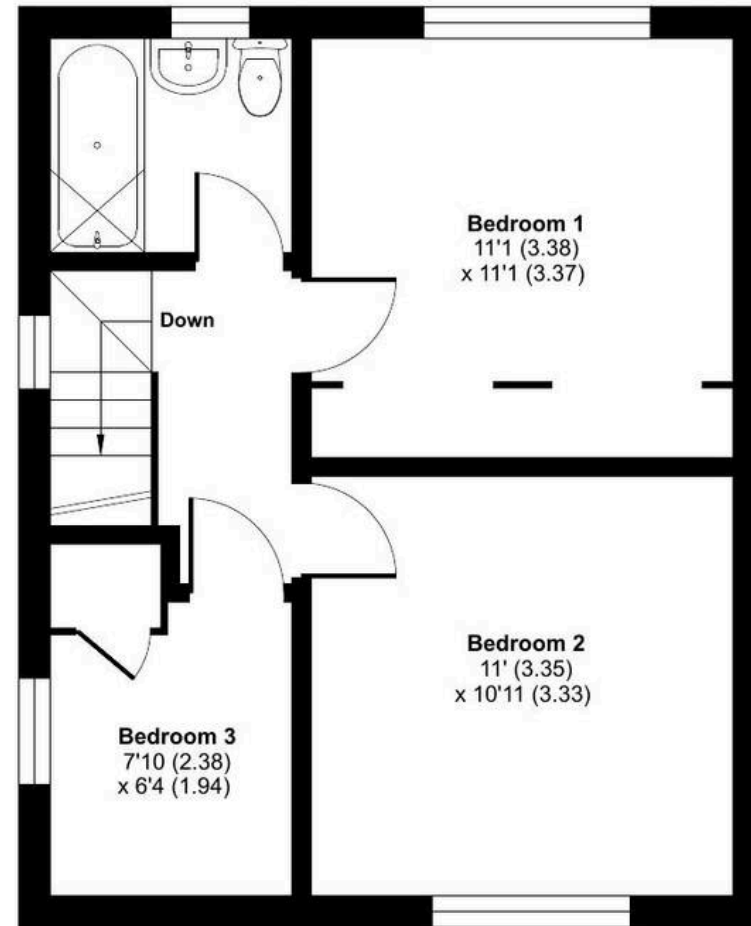
# Mount Avenue, Yalding, Maidstone, ME18

Approximate Area = 794 sq ft / 73.7 sq m

For identification only - Not to scale



**GROUND FLOOR**



**FIRST FLOOR**