



Lionel Road, Tonbridge TN9  
Tonbridge

Guide Price £375,000

**bracketts**  
est. 1828



## 3 Lionel Road

Tonbridge, Tonbridge

- 1930s Semi Detached Family Home
- Three Bedrooms
- Sitting Room
- Dining Room
- Kitchen
- Sought After South Meadow Lawn Area - South Tonbridge
- Close to Mainline Station, Coveted Schools & High Street
- On Street Residents Permit Parking
- In Need of Modernisation
- No Onward Chain

Offered for sale with no onward chain is this attractive 1930s semi-detached home, ideally positioned within the ever-popular Meadow Lawn area. Perfectly located for convenient access to the mainline station with fast links into London (approximately 33 minutes), the High Street, and a selection of highly regarded schools including Sussex Road Primary and local Grammar Schools, the property presents an excellent opportunity for buyers seeking both convenience and potential.

Arranged over two floors, the accommodation comprises entrance hall, two well-proportioned reception rooms and a kitchen to the ground floor. To the first floor there are three bedrooms and a family bathroom.

Externally, the property benefits from a private rear garden and residents' permit on-street parking applied for at Tonbridge & Malling Council.

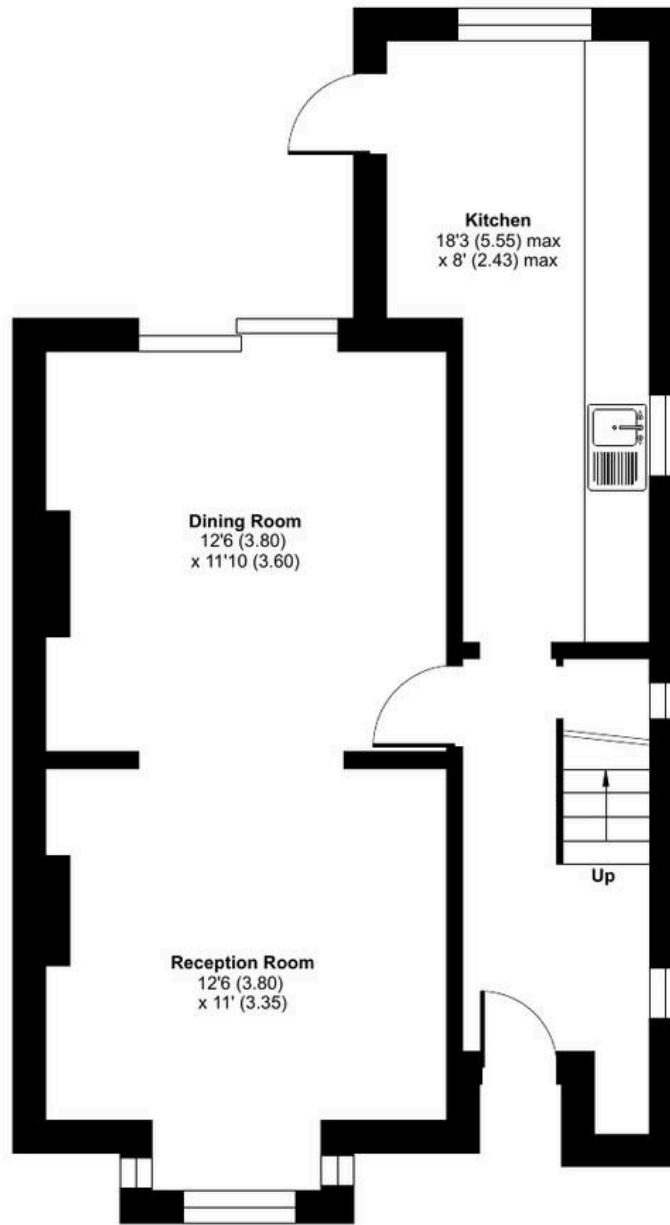




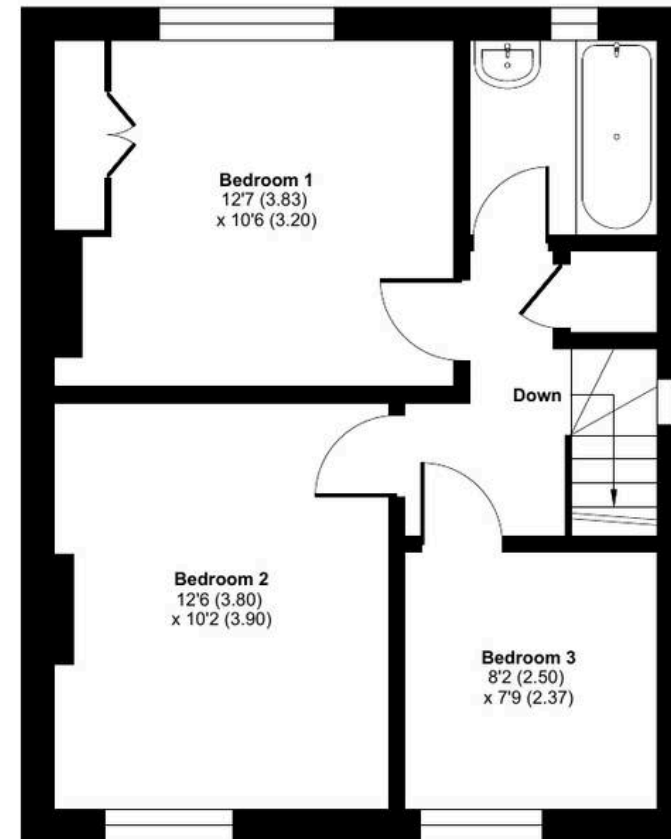
# Lionel Road, Tonbridge, TN9

Approximate Area = 929 sq ft / 86.3 sq m

For identification only - Not to scale



**GROUND FLOOR**



**FIRST FLOOR**

