



19 Homebush Green, Matfield – TN12 7BY  
Tonbridge

Guide Price £550,000

est. 1828  
**bracketts**





## 19 Homebush Green

### Matfield, Tonbridge

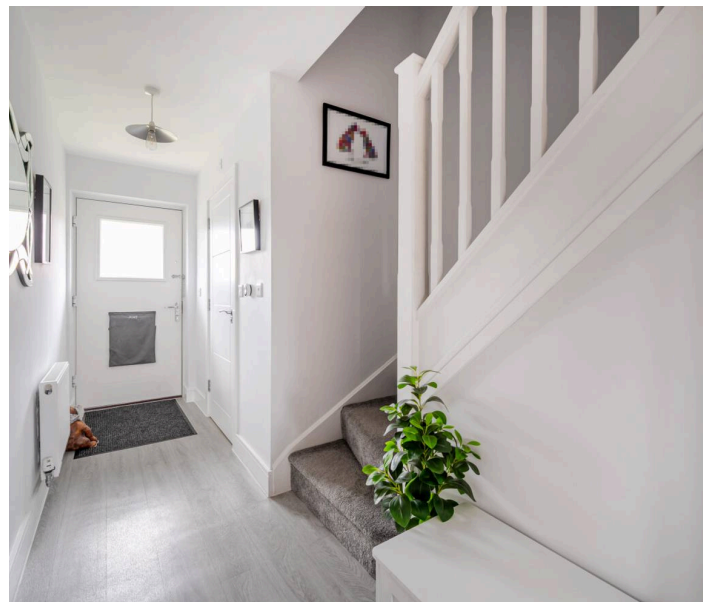
This superb three-bedroom semi-detached home is situated in the heart of the village and comprises an entrance hall, cloakroom WC, sitting room and a stylish open-plan kitchen/dining room. To the first floor are three well-proportioned bedrooms, including a principal bedroom with en suite shower room, together with a contemporary family bathroom.

Externally, the property benefits from a rear garden, driveway parking for two vehicles and attractive views across communal open spaces. The property occupies a convenient position in Matfield village. Matfield is centred around its picturesque village green, framed by period properties, and offers a butcher/greengrocer and public houses. Nearby Brenchley provides additional amenities, while a wider range of amenities can be found in Paddock Wood, Tonbridge and Tunbridge Wells.

Communications are excellent, with the A21 approximately two miles away. Mainline rail services are available at Paddock Wood (approximately two miles) with services to London Bridge from around 41 minutes. Tunbridge Wells station is approximately 6.3 miles (London Bridge from 44 minutes) and Tonbridge station 7.3 miles (London Bridge from 32 minutes). Gatwick Airport is approximately 30 miles away and central London around 43 miles. All distances and journey times are approximate

Council Tax band: E

Tenure: Freehold







# Homebush Green, Matfield, Tonbridge, TN12

Approximate Area = 952 sq ft / 88.4 sq m

For identification only - Not to scale

