



Hildenfields, Tonbridge – TN10 3DQ

Guide Price £399,950

bracketts
est. 1828



We are delighted to offer to the market this exceptional ground floor apartment, situated within the highly sought-after and prestigious Hildenfields Development. Rarely available, this beautifully presented apartment combines spacious accommodation with an enviable setting, offering a wonderful opportunity for those seeking comfort, convenience and security.

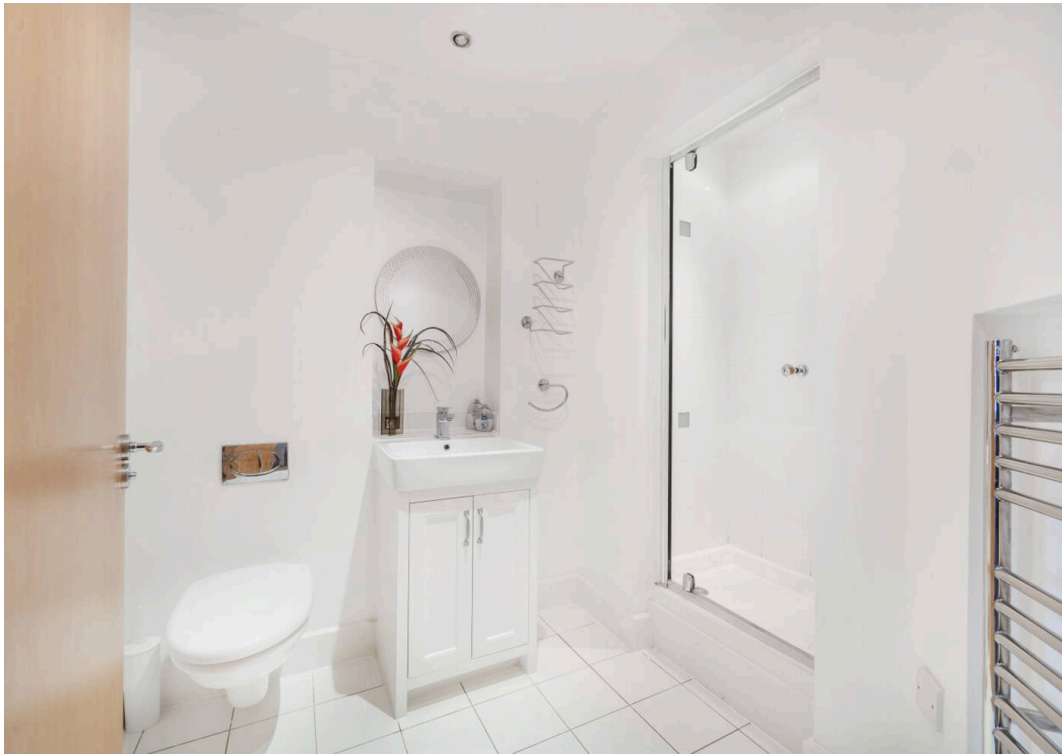
Accessed via private remotely operated gates, the development immediately creates a sense of exclusivity and luxury. Residents are welcomed by an impressive communal entrance hall featuring elegant marble flooring, a striking chandelier and access to both lift and staircase serving all floors.

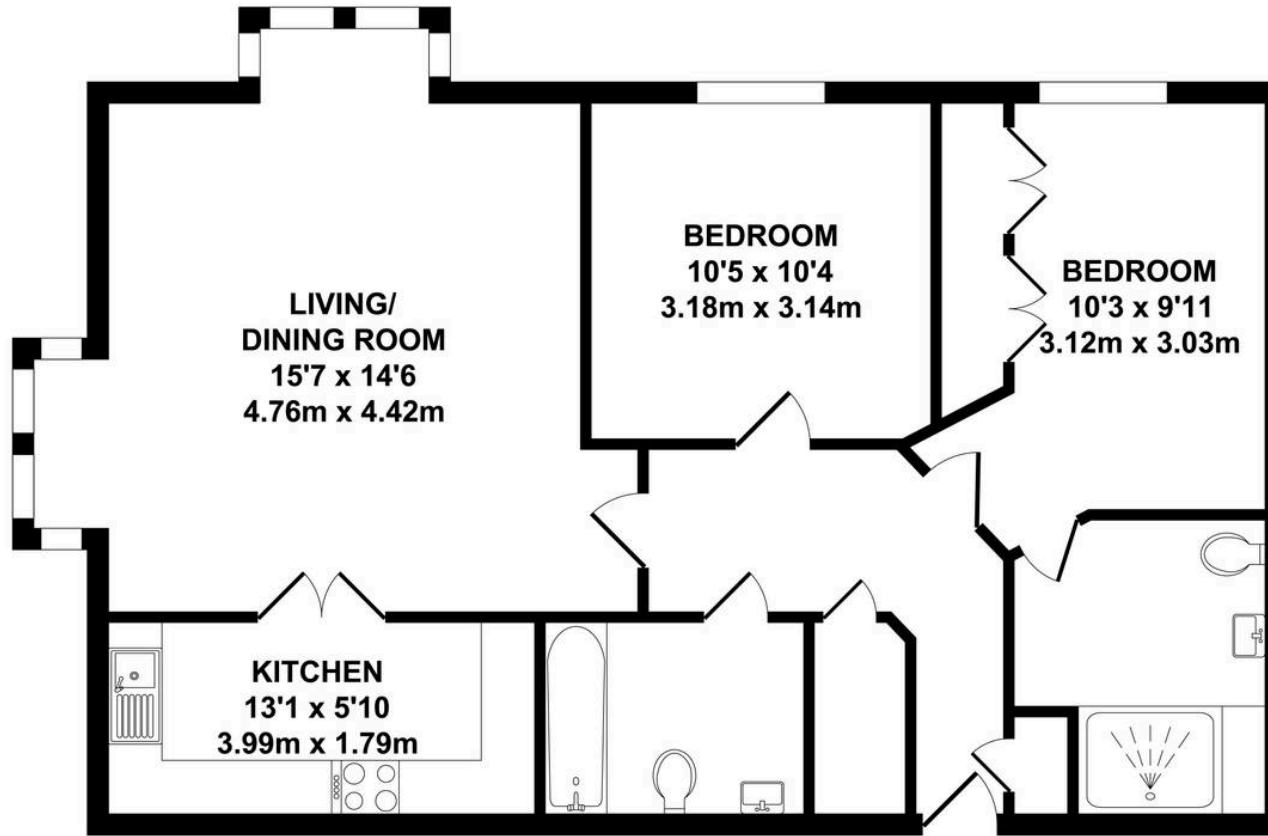
The apartment itself is thoughtfully arranged and offers a generous entrance hall with security entry phone system and ample storage. The heart of the home is the impressive dual-aspect open-plan living and dining room, flooded with natural light. A modern fitted kitchen provides both style and practicality, while two well-proportioned bedrooms offer comfortable accommodation, with the principal bedroom benefiting from an en-suite shower room. A contemporary family bathroom and a large walk-in airing cupboard complete the accommodation.

Externally, residents enjoy allocated parking, visitor parking bays and beautifully maintained communal grounds, together with direct access to the fields beyond the development, creating a peaceful and semi-rural feel.

Ideally located within easy reach of Tonbridge and Hildenborough, the property benefits from excellent access to local amenities, shops, leisure facilities and mainline railway stations, making it an ideal choice for commuters and downsizers alike. Offered to the market with no onward chain







GROUND FLOOR
APPROX. FLOOR AREA
799 SQ.FT.
(74.23 SQ.M.)

TOTAL APPROX. FLOOR AREA 799 SQ.FT. (74.23 SQ.M.)

Whilst every attempt has been made to ensure the accuracy of the floor plan contained here, measurements of doors, windows, rooms and any other items are approximate and no responsibility is taken for any error, omission or mis-statement. This plan is for illustrative purposes only and should be used as such by any prospective purchaser. The services, systems and appliances shown have not been tested and no guarantee as to their operability or efficiency can be given.