



Hertford Place 36-40 High Street, Tunbridge Wells – TN1 1XF

Guide Price £325,000

est. 1828
bracketts



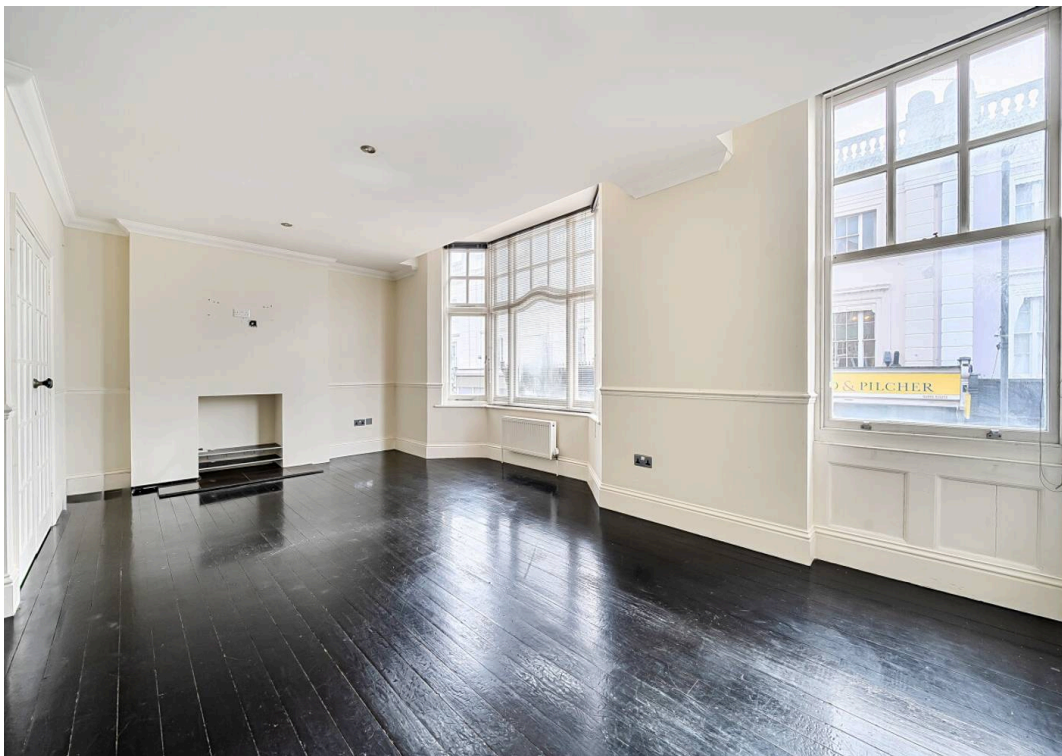
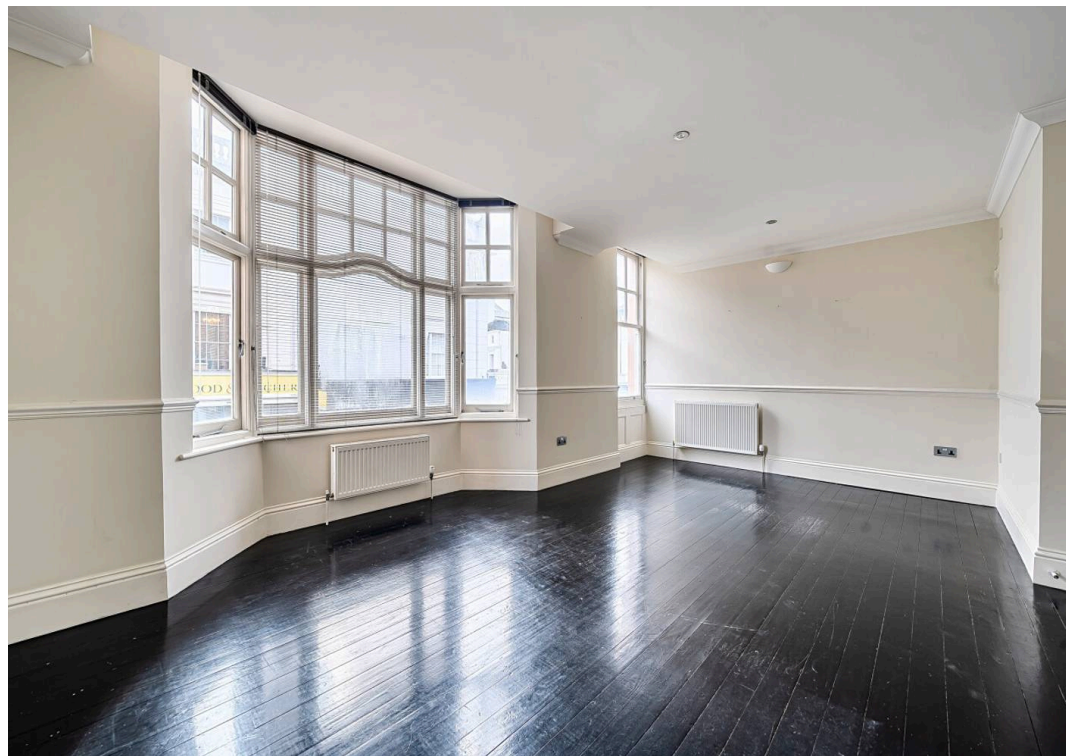
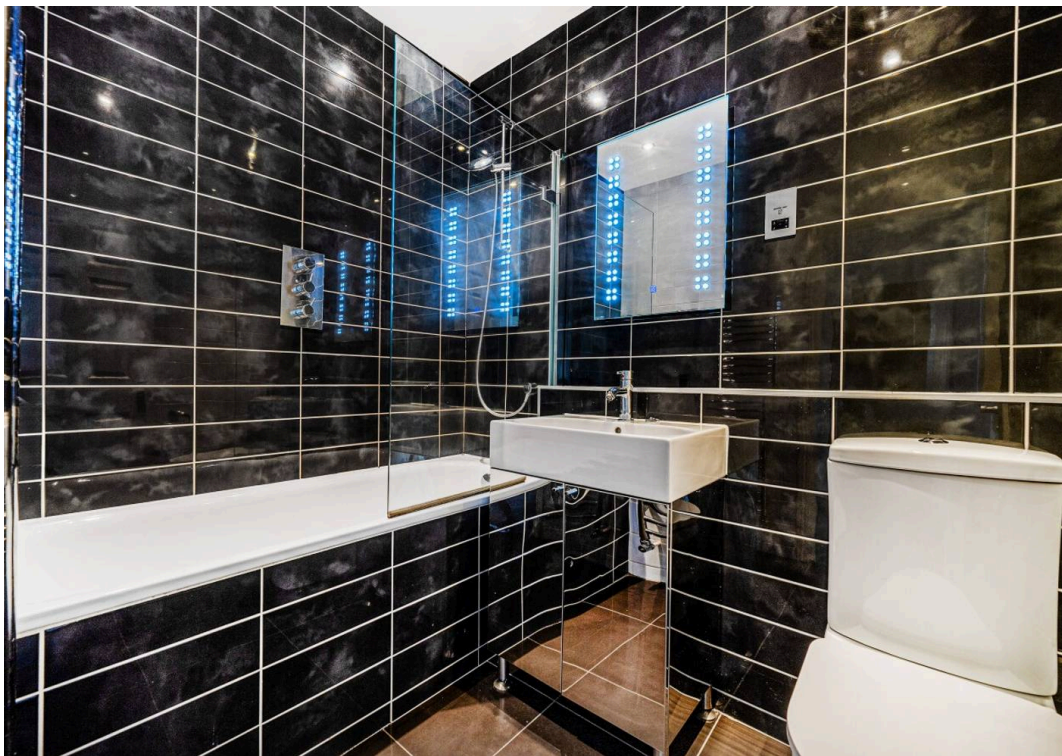
Hertford Place 36-40 High Street,
Tunbridge Wells

- Central location just a few hundred yards from Station
- No forward chain
- Gas fired central heating
- Characterful building
- Single garage via secure barrier entry
- High gloss kitchen with integrated appliances
- Modern white bathroom suite with chrome fittings
- Two bedrooms both with fitted cupboards

Council Tax band: B

Tenure: Leasehold





High Street, Tunbridge Wells, TN1

Approximate Area = 691 sq ft / 64.1 sq m

For identification only - Not to scale

