



Grays House High Street, Hadlow – TN11 0EF
Tonbridge

Guide Price **£475,000**

bracketts est. 1828



- Period End Terrace Family Home
- Central Village Location - Close to Local Amenities
- Recently Redecorated Throughout
- Four Bedrooms - Two Bathroom
- Internal Courtyard Garden
- Arranged Over Three Floors
- EPC Rating E Council Tax Band E

This beautiful period family home situated in the village centre of Hadlow. The property is arranged over three floors, boasts a wealth of character features and benefits from being redecorated throughout.

Which benefits from a good range of local services including a doctor's surgery, dentist, school, chemist, post office, several shops, pubs, a charming tearoom, and Norman church. A more comprehensive range of educational, recreational and shopping facilities, together with main line station serving London Cannon Street/Charing Cross can be found at both Tonbridge and Sevenoaks.

To the first floor there is a family bathroom and two double bedrooms. To the second floor, two further bedrooms one with en suite bathroom.

The property has an EPC Rating E and a Council Tax Band E Available Now

Council Tax band: E

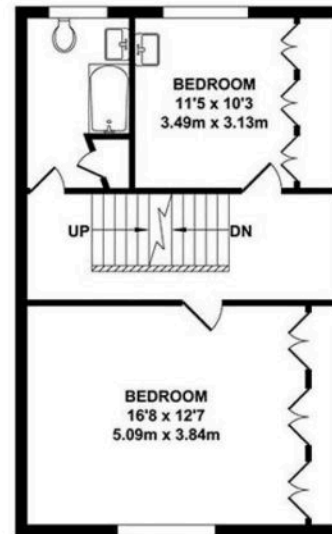
Tenure: Freehold



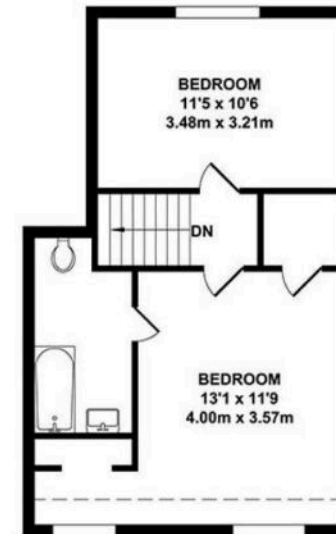




GROUND FLOOR
APPROX. FLOOR AREA
826 SQ.FT.
(76.73 SQ.M.)



FIRST FLOOR
APPROX. FLOOR AREA
514 SQ.FT.
(47.77 SQ.M.)



SECOND FLOOR
APPROX. FLOOR AREA
468 SQ.FT.
(43.51 SQ.M.)

TOTAL APPROX. FLOOR AREA 1808 SQ.FT. (168.01 SQ.M.)

Whilst every attempt has been made to ensure the accuracy of the floor plan contained here, measurements of doors, windows, rooms and any other items are approximate and no responsibility is taken for any error, omission or mis-statement. This plan is for illustrative purposes only and should be used as such by any prospective purchaser. The services, systems and appliances shown have not been tested and no guarantee as to their operability or efficiency can be given.