



Barchester Way, Tonbridge, Kent, TN10

Guide Price £900,000

When experience counts...

est. 1828  
**bracketts**



Offered for sale is this four-bedroom detached bungalow in the quiet residential area of Barchester Way in North Tonbridge. The property is well presented throughout and offers flexible accommodation, with the added bonus of far-reaching views to the rear, overlooking the countryside. Internally the property comprises spacious entrance hall leading to an open plan kitchen diner with patio doors accessing the garden and utility room. There are four bedrooms and a family bathroom, the master benefitting from built in wardrobes and an ensuite bathroom with separate bath and shower. Outside the property has a landscaped, well-stocked garden featuring a pond and patio area overlooking the fields to the rear. There is a good size garage and block paved driveway to the front offering parking for several cars. A well proportioned family home, with scope to extend into the loft, subject to relevant planning consents. We recommend viewing at your earliest convenience. Viewings are by appointment only.

Four Bedrooms

Detached Bungalow

Open Plan Kitchen/Diner

Sitting Room

Family Bathroom & Ensuite

Sought After North Tonbridge  
Location

Landscaped Garden with Pond

Views Overlooking Fields

Garage & Driveway

Viewings Highly Recommended







## LOCATION: Tonbridge

Tonbridge is a thriving market town that has developed over the centuries. It boasts a fine example of a 'Motte and Bailey' Norman castle built in the 13th century, set on the banks of the river Medway with the castle grounds abutting Tonbridge Park offering covered/open air swimming pool, tennis courts, childrens' play areas, miniature railway, putting etc.

Tonbridge town offers an excellent range of retail and leisure activities with many High Street stores, together with a selection of coffee shops, restaurants and local inns.

The mainline station provides fast commuter links into London (Cannon Street/London Bridge/Charing Cross in approximately 40 minutes) with road links to the M20 & M25 motorways via the nearby A26 and A21.

Tonbridge offers first-rate primary and secondary schools (including Grammars and Public Schools) many of which consistently do well in the league tables. There are many places of historical interest in the surrounding areas including Penshurst Place and Gardens, Hever Castle, Knole House and Chartwell (once home to Winston Churchill).

## ADDITIONAL INFORMATION:

Council Tax Band E

Double Glazed Windows

Score	Energy rating	Current	Potential
92+	A		
81-91	B		81 B
69-80	C	73 C	
55-68	D		
39-54	E		
21-38	F		
1-20	G		



**Important Notice:** Bracketts, their clients and any joint agents give notice that they have no authority to make or give any representations or warranties in relation to the property. These particulars do not form part of any offer or contract and must not be relied upon as statements or representations of fact. The text, photographs and plans are for guidance only and are not necessarily comprehensive. All areas, measurements or distances are approximate and no responsibility is taken for any error, omission or mis-statement. It should not be assumed that the property has necessary planning, building regulation or other consents and Bracketts have not tested any services, appliances, equipment or facilities. Purchasers must satisfy themselves by inspection or otherwise. Prices, rents or any other charges are exclusive of VAT unless stated to the contrary.



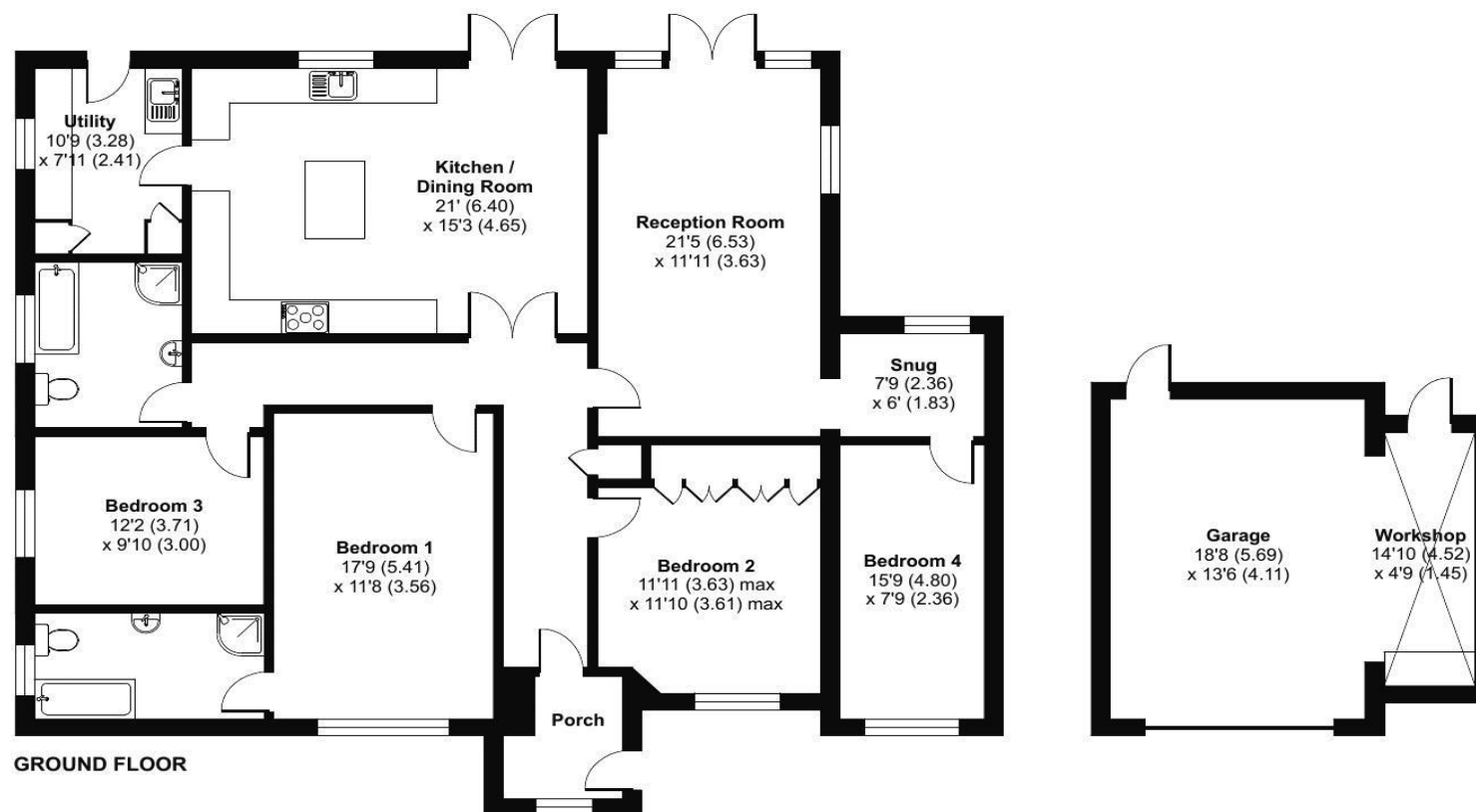
## Barchester Way, Tonbridge, TN10

Approximate Area = 1790 sq ft / 166.3 sq m

Garage / Workshop = 338 sq ft / 31.4 sq m

Total = 2128 sq ft / 197.7 sq m

For identification only - Not to scale



Floor plan produced in accordance with RICS Property Measurement 2nd Edition, Incorporating International Property Measurement Standards (IPMS2 Residential). © nichecom 2025. Produced for Bracketts llp. REF: 1354506

132 High Street,  
Tonbridge, Kent TN9 1BB  
01732 350503  
[info@bracketts.co.uk](mailto:info@bracketts.co.uk)

When experience counts... **bracketts** est. 1828