



Hazelwood Close, Tonbridge, Kent, TN11

Guide Price £450,000 - £475,000

When experience counts...

est. 1828
bracketts

Bracketts are delighted to be marketing this three bedroom terraced home located in the sought after Somerhill Green development by Redrow. The property is close to Bishop Chavasse Primary School, all local amenities, road networks, mainline station and coveted local grammar schools. The accommodation comprises entrance hall, modern fitted kitchen with integral appliances, cloakroom WC, a generous size sitting /dining room with French doors leading on to the landscaped garden. To the first floor there are three bedrooms, the master featuring fitted wardrobes and en suite shower room and family bathroom. Externally the property has the added benefit of two allocated parking spaces and an enclosed rear garden mainly laid to lawn and patio. The property also has 2 years left of NHBC warranty and an EPC B. Viewings are highly recommended.

Three Bedroom Terraced House

Modern Fitted Kitchen with
Integrated Appliances

Sitting Room/ Dining Room

Landscaped Garden

Downstairs Cloakroom

Master Bedroom With Ensuite &
Fitted Wardrobes

Built in 2017 by Redrow

Two Allocated Parking Spaces

Sought After Somerhill Green
Location

Viewing Highly Recommended





LOCATION: Tonbridge

Tonbridge is a thriving market town that has developed over the centuries. It boasts a fine example of a 'Motte and Bailey' Norman castle built in the 13th century, set on the banks of the river Medway with the castle grounds abutting Tonbridge Park offering covered/open air swimming pool, tennis courts, childrens' play areas, miniature railway, putting etc.

Tonbridge town offers an excellent range of retail and leisure activities with many High Street stores, together with a selection of coffee shops, restaurants and local inns.

The mainline station provides fast commuter links into London (Cannon Street/London Bridge/Charing Cross in approximately 40 minutes) with road links to the M20 & M25 motorways via the nearby A26 and A21.

Tonbridge offers first-rate primary and secondary schools (including Grammars and Public Schools) many of which consistently do well in the league tables. There are many places of historical interest in the surrounding areas including Penshurst Place and Gardens, Hever Castle, Knole House and Chartwell (once home to Winston Churchill).

ADDITIONAL INFORMATION:

Council Tax Band D

Double Glazed Windows

Maintenance Charges £415.00 pa

Score	Energy rating	Current	Potential
92+	A		95 A
81-91	B	83 B	
69-80	C		
55-68	D		
39-54	E		
21-38	F		
1-20	G		

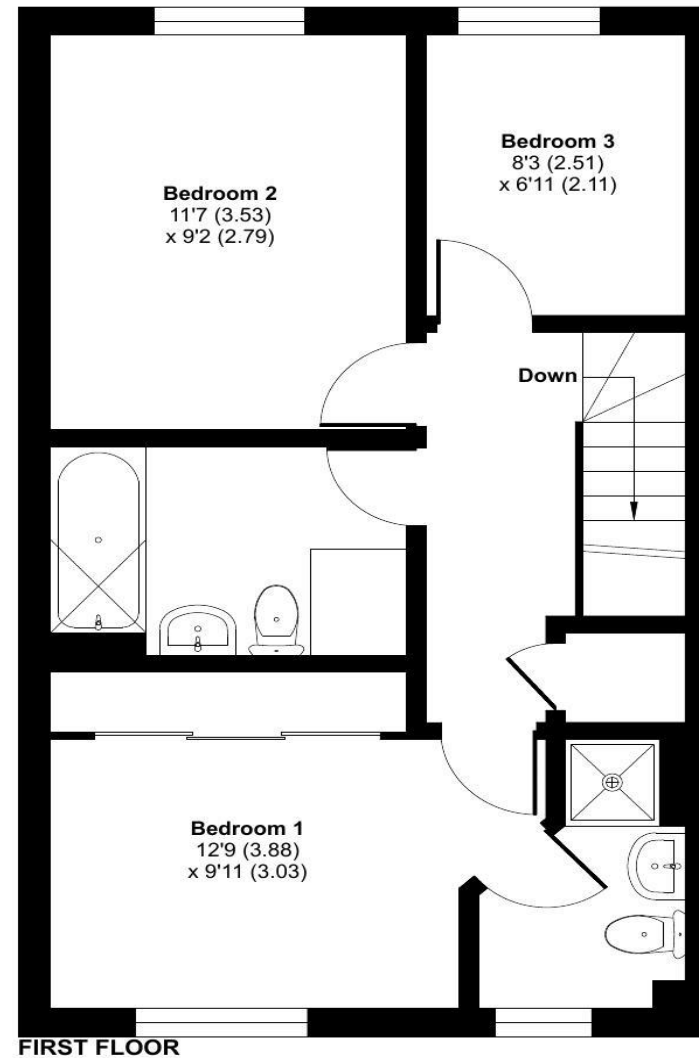
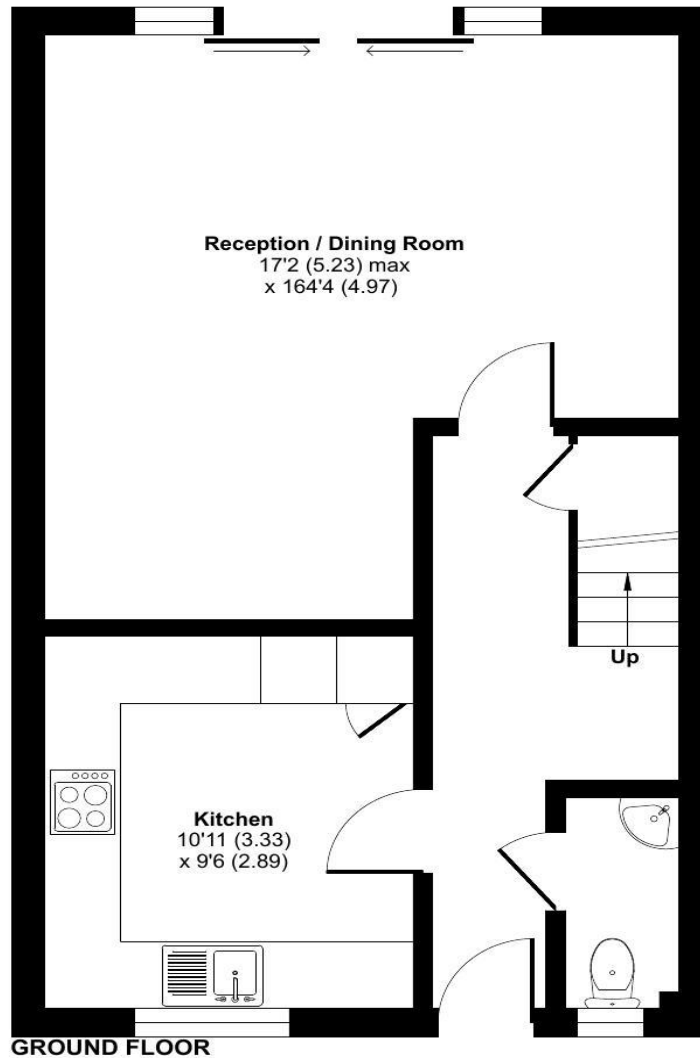


Important Notice: Bracketts, their clients and any joint agents give notice that they have no authority to make or give any representations or warranties in relation to the property. These particulars do not form part of any offer or contract and must not be relied upon as statements or representations of fact. The text, photographs and plans are for guidance only and are not necessarily comprehensive. All areas, measurements or distances are approximate and no responsibility is taken for any error, omission or mis-statement. It should not be assumed that the property has necessary planning, building regulation or other consents and Bracketts have not tested any services, appliances, equipment or facilities. Purchasers must satisfy themselves by inspection or otherwise. Prices, rents or any other charges are exclusive of VAT unless stated to the contrary.

Hazelwood Close, Tonbridge, TN11

Approximate Area = 932 sq ft / 86.5 sq m

For identification only - Not to scale



Floor plan produced in accordance with RICS Property Measurement 2nd Edition, Incorporating International Property Measurement Standards (IPMS2 Residential). © nitchecom 2025. Produced for Bracketts llp. REF: 1345987

132 High Street,
Tonbridge, Kent TN9 1BB
01732 350503
info@bracketts.co.uk

When experience counts...

est. 1828
bracketts