



Brindles Field, Tonbridge TN9

Guide Price £525,000 – £550,000

est. 1828
bracketts



GUIDE PRICE £525,000 - £550,000

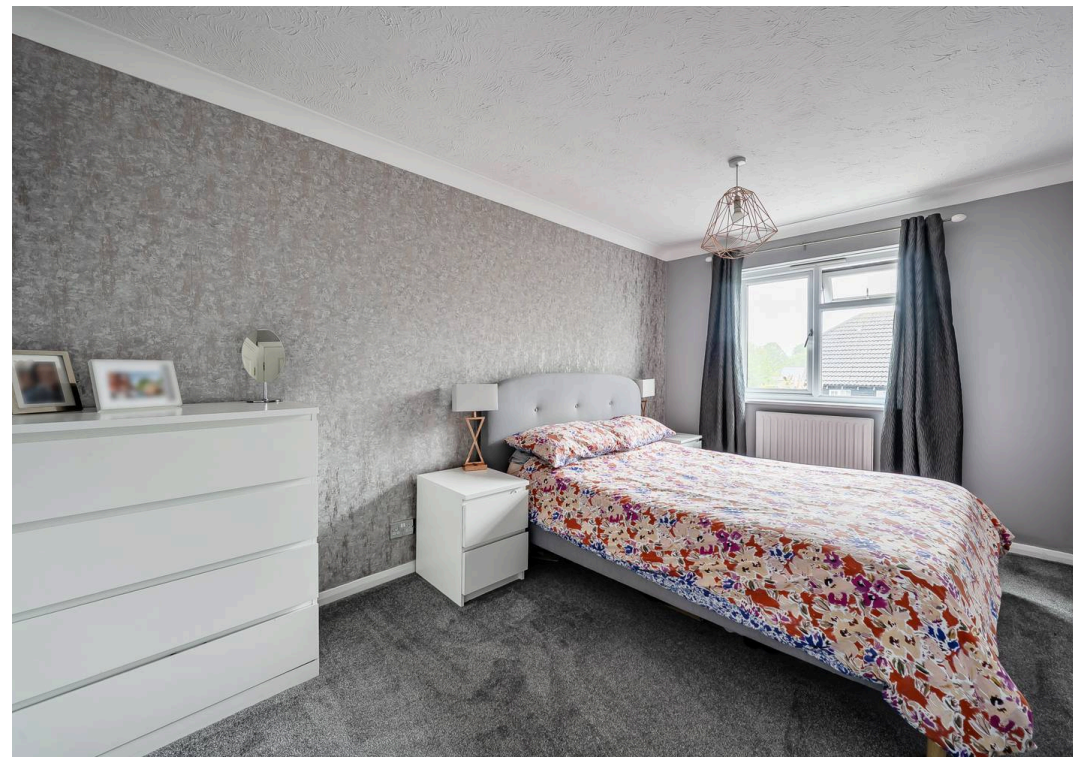
We are delighted to present this modern and beautifully appointed semi-detached family home, tucked away along a private drive serving just four properties. The property offers generous and flexible accommodation throughout. The ground floor comprises entrance hall, a cloakroom/WC. A spacious sitting room opens to the dining area, kitchen and conservatory. Upstairs, the first floor provides three well-proportioned bedrooms and a modern family bathroom. Externally, the home benefits from a good-sized two tiered garden mainly laid to lawn with a patio seating area. Door leading to converted garage which is currently set up as a gym / study retaining the up & over door to the front for storage. To the front, the property occupies a corner plot, providing a rare opportunity for parking for several vehicles.

Ideally located, the home is within easy reach of the amenities of Tonbridge, including shops, transport links, and the mainline railway station. It also falls within the catchment of a number of highly regarded schools, including Tonbridge School and Tonbridge Grammar School. Scenic countryside and riverside walks are just minutes away.

Early viewing is highly recommended to fully appreciate everything this exceptional home has to offer.

Council Tax band: D

Tenure: Freehold



Brindles Field, Tonbridge, TN9

Approximate Area = 988 sq ft / 91.7 sq m

Outbuilding = 184 sq ft / 17 sq m

Total = 1172 sq ft / 108.7 sq m

For identification only - Not to scale

