



24 Bickmore Way, Tonbridge

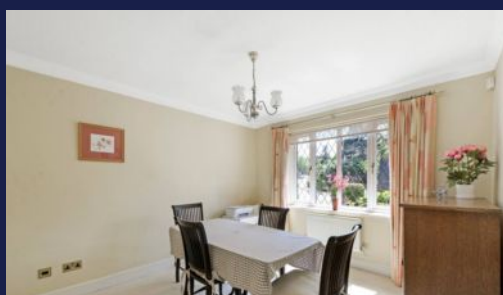
£900,000 Freehold

No Chain • Kitchen / utility Room • Double Garage & Driveway • Viewing Highly Recommended • En suite Shower • Landscaped Rear Garden • Four Bedrooms • Detached Family Home • Tonbridge Mainline Station Approx 1.mile • Sought After Cul De Sac

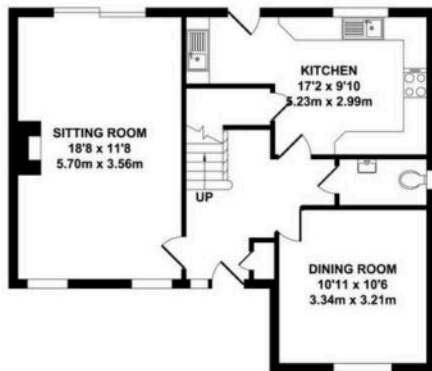
bracketts est. 1828

GUIDE PRICE £900,000 - £925,000

Offered for sale is this beautiful detached family home situated in the highly sought after Bickmore Way just off Yardley Park Road. This particular property occupies a prominent position with an established private rear garden. Internally the property offers flexible and well-appointed accommodation comprising entrance hall, cloakroom WC, dual aspect sitting room, dining room, open plan kitchen / utility room. To the first floor there is a family bathroom, four bedrooms with en suite to principal room. Externally to the front there is drive with off street parking leading to a double garage with power & light. The rear garden has been landscaped to create a private mature garden mainly laid to lawn with mature shrubs, borders and trees. Offered with no onward chain we recommended viewing at your earliest convenience.



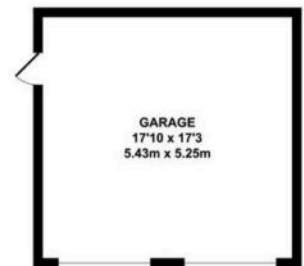




GROUND FLOOR
APPROX. FLOOR AREA
609 SQ.FT.
(56.55 SQ.M.)



FIRST FLOOR
APPROX. FLOOR AREA
670 SQ.FT.
(62.29 SQ.M.)



OUTBUILDING
APPROX. FLOOR AREA
307 SQ.FT.
(28.51 SQ.M.)

TOTAL APPROX. FLOOR AREA 1586 SQ.FT. (147.35 SQ.M.)

Whilst every attempt has been made to ensure the accuracy of the floor plan contained here, measurements of doors, windows, rooms and any other items are approximate and no responsibility is taken for any error, omission or mis-statement. This plan is for illustrative purposes only and should be used as such by any prospective purchaser. The services, systems and appliances shown have not been tested and no guarantee as to their operability or efficiency can be given.

Zome Media ©2025

You can include any text here. The text can be modified upon generating your brochure.