



The Ash House Back Lane, Shipbourne – TN11 9PP
Tonbridge

Guide Price **£800,000**

bracketts
est. 1828



The Ash House Back Lane

Shipbourne, Tonbridge

- Semi Detached Oak Barn in the Sought-After Village of Shipbourne
- Sought After Location View Countryside Views
- Four Bedrooms
- Two En Suite Bedrooms
- No Onward Chain

GUIDE PRICE £800,000 - £825,000

Nestled within the heart of an Area of Outstanding Natural Beauty and enjoying a picturesque semi-rural setting in the sought-after village of Shipbourne, this attractive four-bedroom semi-detached barn conversion offers beautifully arranged and highly versatile accommodation extending across four floors.

Blending characterful barn-style architecture with modern living, the property provides generous and flexible living space ideally suited to contemporary family life. The ground floor is centred around a welcoming entrance hall, leading through to a spacious sitting room and a stylish open-plan kitchen and dining area, creating the perfect environment for both everyday living and entertaining.

Council Tax band: F

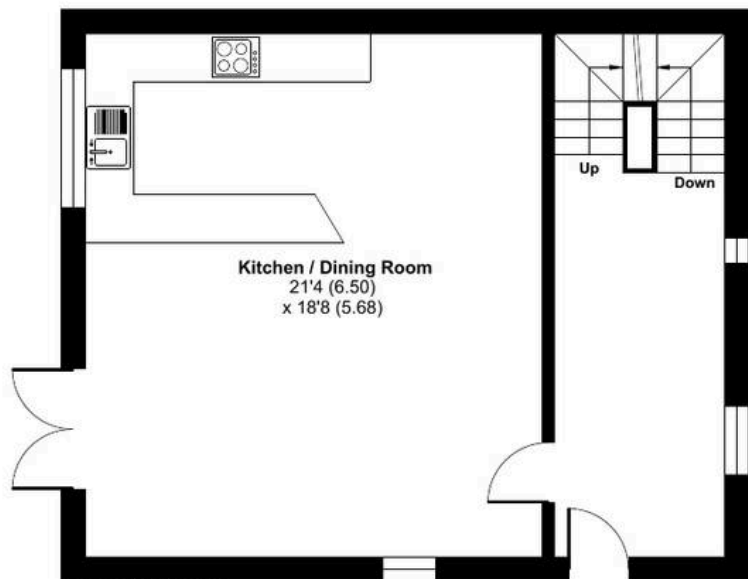
Tenure: Freehold



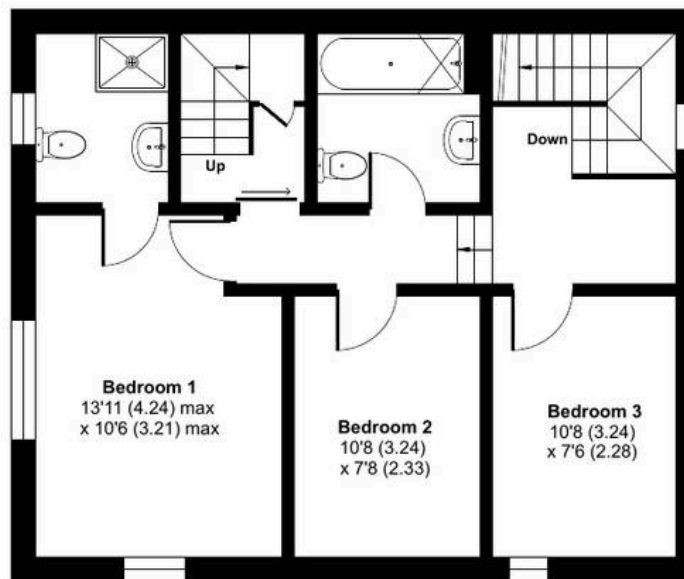
The Ash House, Back Lane, Shipbourne, Tonbridge, TN11

Approximate Area = 1766 sq ft / 164 sq m

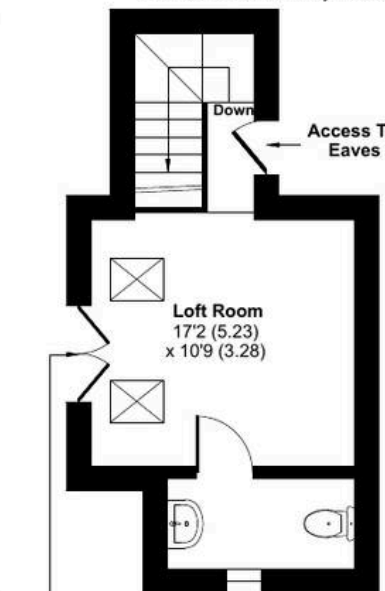
For identification only - Not to scale



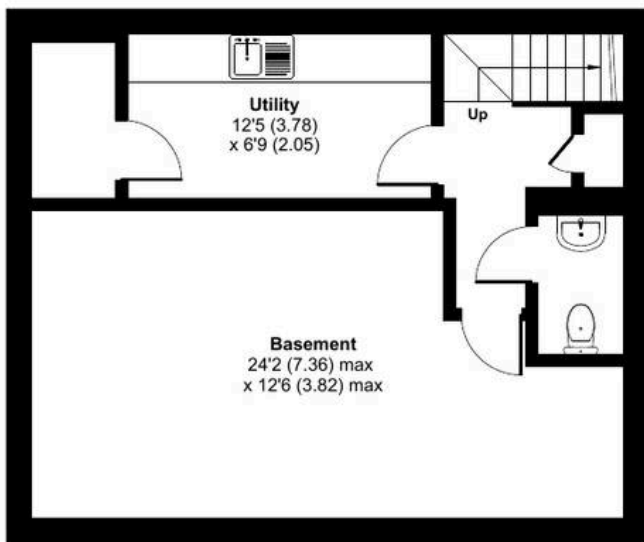
GROUND FLOOR



FIRST FLOOR



SECOND FLOOR



LOWER GROUND FLOOR

